

Appendix C2 – Source Identification (Industrial and Commercial Properties)

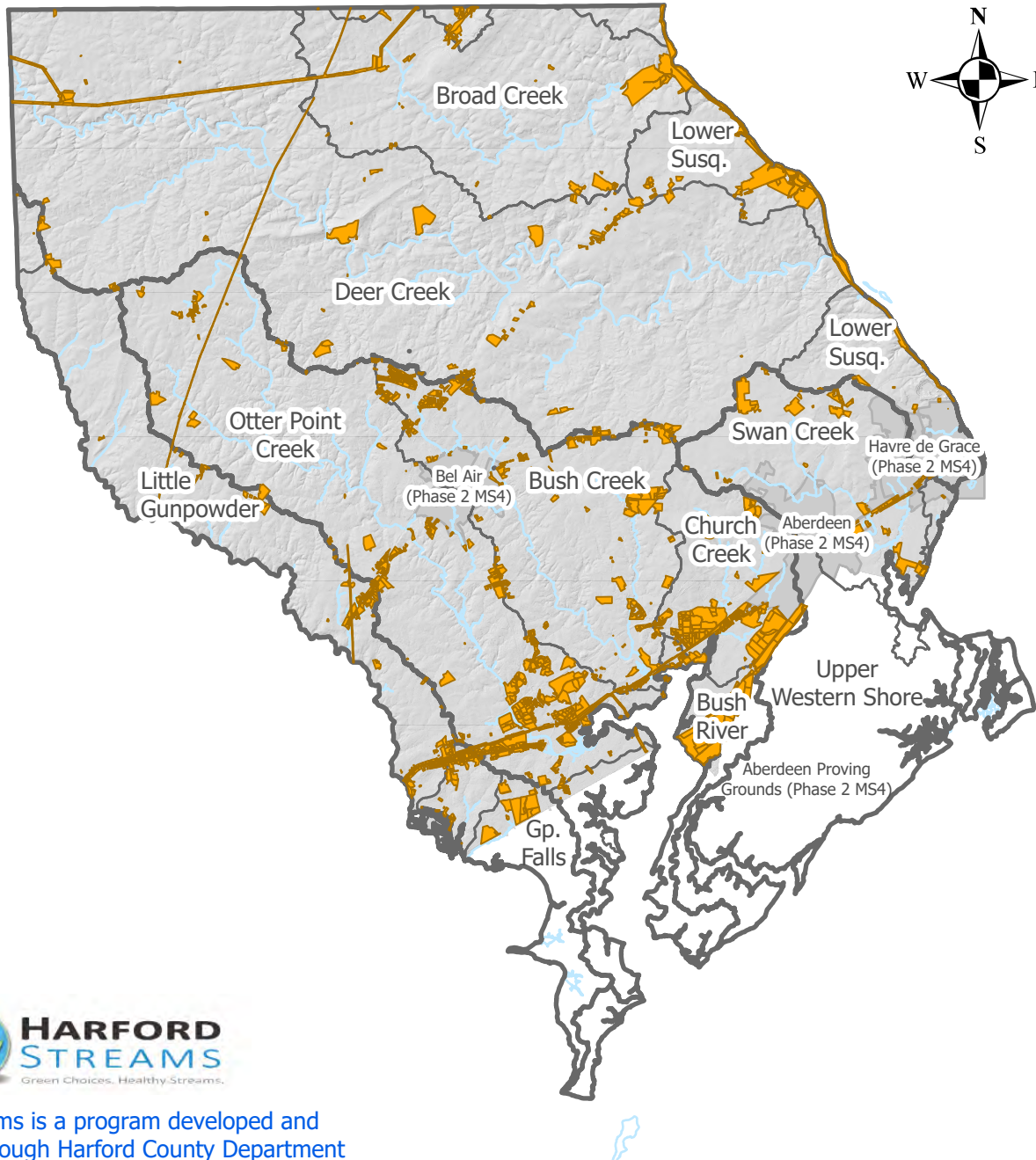
Appendix C2

Harford County, MD Department of Public Works Watershed Protection and Restoration

Source Identification (July 1, 2024 - June 30, 2025)



Robert Cassilly
County Executive



Harford Streams is a program developed and
administered through Harford County Department
of Public Works

0 1 2 4 6 8
Miles

NPDES Phase 1 MS4 Permit 22-DP-3310

Printed 12/2025

www.HarfordCountyMD.gov
HarfordStreams@HarfordCountyMD.gov
www.Facebook.com/HarfordStreams
(410) 638 - 3217