



December 2019



The gift of kindness is one we can all afford to give this holiday season. To those who struggle at this time of year, or even to a stranger we may pass in the holiday rush, an act of kindness lifts the spirits and strengthens our families and communities.

From my family to yours, Merry Christmas, Happy Holidays & Happy New Year.

Barry Glassman
County Executive

Featured Stories:

- [Christmas Tree Finder](#)
- [Road Projects Map](#)
- [Volunteer Opportunities](#)
- [The Container Store](#)
- [Santa's Sensory Workshop](#)
- [Home Fire Safety](#)
- [Happy Holidays Video](#)

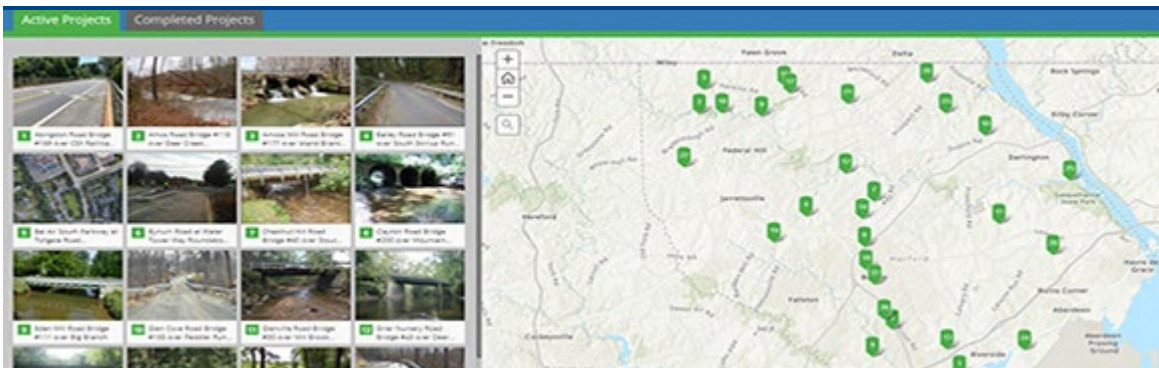
FIND HARFORD COUNTY CHRISTMAS TREE FARMS



www.harfordcountymd.gov/harfordfarmfinder

Christmas tree farm finder

Harford County is home to a number of Christmas tree farms offering fresh trees and wreaths for the holiday season. To help you find a live tree, and to support these local businesses, my administration has created an interactive map of tree farm locations with links to their websites, business hours, and directions. The map is available on the county website by clicking the Christmas tree icon on the Harford Farm Finder at www.harfordcountymd.gov/harfordfarmfinder.



County road projects map

Harford County maintains roads covering more than 1,000 miles - roughly the distance from Bel Air to Florida - and 223 bridges requiring dozens of major repair projects each year. To make it easier for you to get information about these county projects, our Department of Public Works, Highways Division has published an [interactive map on the county website](#). The map shows the location of planned capital projects for county roads and bridges, complete with photos, project details, and periodic updates. It also includes a list of recently completed projects, ongoing road resurfacing projects, and an explanation of how roads are prioritized for resurfacing.



Holiday volunteer opportunities

In the spirit of the holidays, my administration is connecting volunteers with local nonprofits to help our neighbors in need. The ["Volunteer Harford" Web page](#) published on the county website offers activities for individuals, civic organizations and businesses interested in giving back to the community. The page also has resources for those in need and will be updated throughout the holiday season. By working together we can ensure that no one in Harford County goes to bed hungry or without a warm place to sleep.



Container Store logistics center brings new jobs

The Container Store specializes in storage solutions for their customers and is consistently ranked among the top 100 companies to work for by Fortune magazine. In Harford County, the company has invested \$29 million and is creating 150 new jobs at its state-of-the-art logistics center opened in November in the Eastgate Industrial Park in Perryman. For more information about these and other job opportunities in Harford County, contact the [Susquehanna Workforce Network](#), co-located with our Office of Community & Economic Development in Havre de Grace.

PROGRAMS FOR INDIVIDUALS WITH DISABILITIES
THERAPEUTIC REC. SANTA'S SENSORY WORKSHOP

Santa's Sensory Workshop

Celebrate the holiday season with us!
Bring your camera to take a picture with Santa and Rudolph and listen to holiday caroling from the Staccatos. Then visit Santa's workshop to make fun crafts and participate in winter wonderland games!

Saturday, December 14, 2019
10:00 - 11:30 a.m.
(please call the TR office to schedule a picture appointment time)

All Ages | \$3 per person
Churchville Recreation Center - Level Building
3023 Level Road, Churchville

Online pre-registration required by December 13 at noon:
www.harfordcountymd.gov/parksrecreation

*Participants must have a disability or be a family member / friend of a registrant.
Please call two weeks prior to the program to request disability accommodations or modifications.*

BARREY GLASSMAN
Harford County Executive

KATHY BURLEY
Director, Parks & Recreation

Harford County Therapeutic Recreation
Harford County Department of Parks & Recreation
nkotlach@harfordcountymd.gov | 410.635.8899
www.harfordcountymd.gov/TherapeuticRec

Santa's Sensory Workshop Dec.14; volunteers needed

Bringing the kids to see Santa is a tradition for many families, but for some children with differing abilities the noise and activity can be challenging. This holiday season, my administration invites these children and their families to take photos with Santa in a small, quiet setting and make holiday crafts at Santa's Sensory Workshop on Saturday, December 14. Reservations are available from 10 - 11:30 a.m. for this new event at our Churchville Recreation Center. [Registration is required](#) and volunteers are needed. Please see the flier for details.

Home fire safety

Recent home fires in the news are a reminder to use caution with your fireplace and woodstove. Please do not use flammable liquids to start any fire and do not use a lot of paper to build a fire. Remember to be sure your fire is completely out before you leave home or go to bed. When there are hot ashes in your fireplace, leave the damper open to help keep carbon monoxide outside of your house. Finally, allow ashes to cool and discard them in a metal container with a tight-fitting lid. Thanks & be safe.





Merry Christmas & Happy Holidays 2019

Thanks to Jarrettsville Nurseries for lending us their location for this year's holiday video. Take a look and help support all of our Christmas tree farms in Harford County.

Want more?

Get more updates, photos & event information. Like Harford County Government on [Facebook](#). Follow us on [Twitter](#) @HarfordCountyMD. Check out our new Instagram account: [Harford_County_Government_](#)



Email: FYI@harfordcountymd.gov

Maryland's New Center of Opportunity!